

# 522 ALUMINUM DOOR SYSTEM



ALUMINUM FULL-VIEW DOORS



**IDEAL FOR RESTAURANTS, AUTO DEALERSHIPS AND ANY APPLICATION WHERE THE DOOR NEEDS TO INTEGRATE SEAMLESSLY WITH THE AESTHETICS OF THE BUILDING.**

- Frameless design – the ultimate sleek and modern aluminum full-view door
- Vinyl seals between the sections and the flexible bottom seal help to minimize air flow
- Large glass panels, adhered to the front of the door allow maximum light and visibility
- 1 3/8" thick aluminum section with special reinforcing design for long life and durability
- 2 1/4" integrated reinforcing rib on upper intermediate rail for doors 10'3" wide and over
- Meets ASHRAE 90.1 and IECC® air infiltration requirements with a third-party tested value of less than 0.4 cfm/ft<sup>2</sup>
- Meets California Code of Regulation, Title 24 air infiltration requirements with a third-party tested value of less than 0.3 cfm/ft<sup>2</sup>



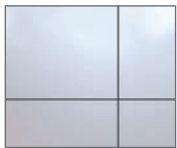
INDUSTRY LEADING  
COMMERCIAL & INDUSTRIAL SOLUTIONS

# MODEL 522 ALUMINUM DOOR SYSTEM

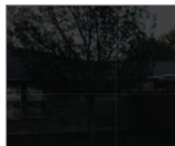
## Standard features at a glance

Max width	18'2" (5486 mm)	Springs	10,000 cycles
Max height	14'1" (4318 mm)	Track	Provide track as recommended by manufacturer to suit loading required and clearances available
Door assembly	Stile and rail assembly of aluminum alloy 6063-T6, 1 3/8" thick stiles and rails, joined with self tapping screws	Warranty	One (1) Year Limited
Rails	Top and bottom rails with 3 1/2" wide, lower intermediate rail 1 3/8", upper rail 1 5/8", minimum wall thickness 0.062"	<b>Options</b>	
Stiles	Single end stiles are 3 1/2" wide, center stile 3" wide, minimum wall thickness 0.062"	<ul style="list-style-type: none"> <li>• Springs: 25,000, 50,000, 75,000 or 100,000 cycles</li> <li>• Weather stripping: jamb and header seals</li> <li>• White or Black powder coat track</li> </ul>	

## Glass options



Opaque White



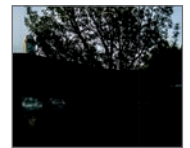
Opaque Black



Mirrored Gray



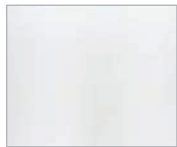
Mirrored Bronze



Translucent Black

## Structure options

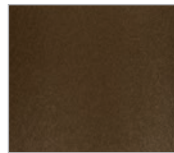
### Powder Coat Finishes



White



Black

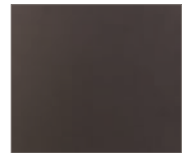


Bronze

### Anodized Finishes



Black



Bronze

Actual colors may vary from brochure due to fluctuations in the printing process. Always request a color sample from your Overhead Door Distributor for accurate color matching.

## Aluminum and glass pairing

ALUMINUM OPTIONS	GLASS COLOR
White Powder Coat	Opaque White
Black Powder Coat / Bronze Powder Coat / Black Anodized / Bronze Anodized	Opaque Black / Mirrored Gray / Mirrored Bronze / Translucent Black

Each door is unique and built to order, therefore a slight deviation in glass alignment is possible. These doors may become hot to the touch in sustained hot weather. See website for door sizes, section selection and other details.



INDUSTRY LEADING  
COMMERCIAL & INDUSTRIAL SOLUTIONS



2501 S. State Hwy. 121 Bus., Suite 200, Lewisville, TX 75067

1-800-929-DOOR • sales@overhaddoor.com

www.overhaddoor.com